

Ad Parentes

Journal of the APEEE, The Parents' Association of the European Schools in Luxembourg
No. 2/2006-07 (special edition)

**VERY IMPORTANT !
TRÈS IMPORTANT !
SEHR WICHTIG !**

MONDAY 27th NOVEMBER 2006

LUNDI 27 NOVEMBRE 2006

MONTAG 27. NOVEMBER 2006

from/à partir de/von 20.00 H

**ANNUAL GENERAL MEETING
ASSEMBLÉE GÉNÉRALE ANNUELLE
JÄHRLICHE GENERALVERSAMMLUNG**

Bâtiment Jean Monnet - Salle M6

APEEE – Bâtiment Jean Monnet C1/004 L – 2920 Luxembourg

Telephone : 4301.33105 Fax : 4301.34869 E-mail (APEEE) : office@apeee.lu Web site : www.apeee.lu
Bank account : CCP LU81 1111 0939 4145 000

Editorial

Dear parents,

This is the second edition of the school magazine for the current academic year. It is distributed by post to all paid-up members of the association.

The second edition of the year is traditionally focused on the Annual General Assembly of the APEEE, which this year will be held on Monday 27th November.

The content reflects the draft agenda for the AGM, which as usual is split into two parts. The first, administrative, part covers financial and other reports of the management committee for the 2005-2006 academic year.

The second part is a discussion which we propose to centre around the theme of the Future of the European Schools. This subject is clearly of high importance for all current and future children enrolled in the European School system. It has been addressed in previous editions of the magazine and meetings, but there have been some significant recent developments and the management committee would like to have an exchange of views about these.

All paid-up members of the APEEE are entitled to attend and vote at the AGM. For those of you who are already members, please do not miss this opportunity to influence official strategy. Should you not already be a member, details of how to join including registration forms are available for download from the APEEE website (www.apeeel.lu).

Your Editorial team

APEEE Luxembourg Secretariat

Bâtiment Jean Monnet – Bureau C1/004 –
L-2920 LUXEMBOURG
Tel. 4301 33105, Fax 4301 34869
E-mail : office@apeee.lu
Web: <http://www.apeeel.lu>

Ad Parentes contributions

Dear parents,

This is *your* journal. The next issue is scheduled before the end of term. If you would like to publish something, please send it to us.

Chers parents,

Voici *votre* journal. La prochaine édition est prévue avant la fin du trimestre. Si vous voulez publier quelque chose, veuillez nous l'envoyer.

Liebe Eltern,

Dies ist *Ihre* Zeitschrift. Die nächste Ausgabe erscheint im Sommer. Wenn Sie etwas veröffentlichen möchten, bitte schicken Sie es uns.

E-mail: editor@apeee.lu

Contents – Table des matières

| | |
|---|-----------|
| Draft agenda (and proxy voting slip) | 3 |
| Projet d'Ordre du Jour (et formulaire de procuration de vote) | 5 |
| Tagesordnungsentwurf (und Stimmübertragungen) | 6 |
| Un mot du président | 7 |
| A word from the President..... | 7 |
| Rapport financier 2005 - 2006 | 8 |
| Financial report 2005 - 2006..... | 11 |
| Comité de gestion 2005-2006 Management committee | 14 |
| Organigramme de l'APEEE 2005-2006 APEEE organisation chart | 14 |
| Groupes de travail 2005-2006 Working groups | 15 |
| Conseil d'Éducation maternelle et primaire 2005 - 2006 | 17 |
| Nursery and primary Education Committee 2005 - 2006 | 17 |
| Voyages scolaires 2005 - 2006 | 18 |
| Residential school trips 2005 - 2006..... | 18 |
| Conseil d'Éducation secondaire 2005 - 2006 | 20 |
| Secondary Education Committee 2005 - 2006..... | 20 |
| Comité Bibliothèque 2005 - 2006 | 21 |
| Library Committee 2005 - 2006..... | 21 |
| Santé et Sports 2005 - 2006 | 22 |
| Health and Sports 2005 - 2006 | 22 |
| Enfants à besoins spéciaux 2005 - 2006 | 23 |
| Children with special needs 2005 - 2006..... | 23 |
| Conseil d'Administration Lux.II 2005 - 2006 | 24 |
| Lux.II Administrative Board 2005 - 2006 | 24 |
| Bâtiments et sécurité Lux.II 2005 - 2006 | 25 |
| Lux.II buildings and security 2005 - 2006..... | 25 |
| Coordination avec groupes d'action 2005 - 2006 | 26 |
| Coordination with action groups 2005 - 2006..... | 26 |
| Conseil d'Administration Lux.I 2005 - 2006 | 27 |
| Lux.I Administrative Board 2005 - 2006 | 27 |
| Enfants Catégorie III 2005 - 2006 | 28 |
| Category III children 2005 - 2006 | 28 |
| Activités périscolaires 2005 - 2006 | 30 |
| Extracurricular activities 2005 - 2006..... | 30 |
| Comité Cantine 2005 - 2006 | 31 |
| Canteen Committee 2005 - 2006..... | 31 |
| Statuts 2005 - 2006 | 33 |
| Statutes 2005 - 2006..... | 33 |
| Fêtes et Manifestations 2005 - 2006 | 34 |
| School Fête and Events 2005 - 2006 | 34 |
| Echanges linguistiques 2005 - 2006 | 35 |
| Language exchanges 2005 - 2006..... | 35 |
| Enfants SWALS et accueil nouveaux pays membres 2005 - 2006 | 36 |
| SWALS children and welcome to new countries 2005 - 2006..... | 36 |
| Magazine de l'école « Ad Parentes » 2005 - 2006 | 37 |
| The school magazine "Ad Parentes" 2005 - 2006 | 37 |
| The APEEE web site 2005 - 2006 | 38 |
| The APEEE web site 2005 - 2006 | 38 |
| Fiches d'infos 2005 - 2006 | 40 |
| Newsletter 2005 - 2006..... | 40 |
| Délégués de classe maternelle et primaire 2005 - 2006 | 41 |
| Nursery and primary class delegates 2005 - 2006 | 41 |
| Délégués de classe secondaire 2005 - 2006 | 42 |
| Secondary class delegates 2005 - 2006 | 42 |
| Contacts avec d'autres associations 2005 - 2006 | 43 |
| Contacts with other associations 2005 - 2006 | 43 |
| Interparents 2005 - 2006 | 44 |
| Interparents 2005 - 2006 | 44 |
| Thème du débat : L'avenir des Ecoles Européennes | 45 |
| Discussion theme : The Future of the European Schools..... | 46 |
| APEEE contact information 2006-2007 | 48 |

Draft agenda

*Version française ci-après
Deutsche fassung hierunter*

The Management Committee of the Parents' Association hereby invites you to attend, either in person or by proxy (3 proxy votes maximum per person), the Annual General Meeting of the Parents' Association which will be held on :

MONDAY 27th NOVEMBER 2006

at 8 o' clock pm

**in Room M1 of the Jean Monnet Building
(European Commission, Kirchberg)**

We would remind you that only members of the APEEE who have paid their subscription* for the current year may attend and vote at the Annual General Meeting.

AGENDA

- | | | |
|----|---|--------|
| 1. | Approval of the Agenda | 5 min |
| 2. | Election of the Tellers (4) | 5 min |
| 3. | Financial Report | 10 min |
| 4. | Questions on the Annual Report of Activities | 20 min |
| 5. | Debate on the Future of the European Schools system | 60 min |
| 6. | Free discussion | 20 min |

Proxy voting slip

I, the undersigned, member of the Parents' Association, cannot attend the Annual General Meeting on Monday 27/11/2006.

I hereby authorise Mr / (Mrs)
to cast my vote if necessary.

Signature

*Registration forms with bank transfer details are available on the APEEE website.

| |
|-------------------------------|
| Projet d'Ordre du Jour |
|-------------------------------|

*English version above
Deutsche fassung hierunter*

Votre Comité de Gestion vous invite à participer ou à vous faire représenter (3 procurations maximum par personne) à l'Assemblée Générale qui se tiendra le :

LUNDI 27 NOVEMBRE 2006

à 20.00 heures

**Salle M6 – Bâtiment Jean Monnet
(Commission Européenne, au Kirchberg)**

Il est rappelé que, seuls pourront participer à l'Assemblée Générale, les membres de l'Association ayant réglé leur cotisation pour l'année en cours.

ORDRE DU JOUR

- | | | |
|----|--|--------|
| 1. | Approbation de l'Ordre du Jour | 5 min |
| 2. | Election des Scrutateurs (4) | 5 min |
| 3. | Rapport Financier | 10 min |
| 4. | Questions sur le Rapport d'Activités | 20 min |
| 5. | Débat sur le futur du système des Ecoles Européennes | 60 min |
| 6. | Discussion libre | 20 min |

| |
|--|
| Formulaire de procuration de vote |
|--|

Je soussigné, membre de l'APEEE, ne puis assister à l'Assemblée Générale de ce lundi 27/11/2006.

Par la présente, je donne procuration à (M / Mme) pour exprimer ma voix lors d'un vote éventuel.

Signature

Entwurf der Tagesordnung

*English version above
Version française ci-avant*

Der geschäftsführende Ausschuss der Elternvereinigung lädt Sie – oder ein von Ihnen als Vertreter bestimmtes Mitglied (maximal 3 Stimmübertragungen pro Person) – zu der Generalversammlung ein, am

MONTAG, den 27 NOVEMBER 2006

um 20.00 Uhr

**im Sitzungssaal M6 – Gebäude Jean Monnet
(Europäische Kommission – Kirchberg).**

Es wird daran erinnert, dass alle Mitglieder der Elternvereinigung teilnahmeberechtigt sind, sofern sie ihren Beitrag für das laufende Geschäftsjahr bezahlt haben.

TAGESORDNUNG

- | | | |
|----|---|--------|
| 1. | Annahme der Tagesordnung | 5 Min |
| 2. | Wahl der Wahlhelfer (4) | 5 Min |
| 3. | Finanzbericht | 10 Min |
| 4. | Fragen zu dem Rechenschaftsbericht | 20 Min |
| 5. | Debate on the Future of the European Schools system | 60 Min |
| 6. | Diskussion | 20 Min |

Stimmübertragungen

Hiermit bestätige ich, Mitglied der Elternvereinigung, dass ich am Montag, den 27.11.2006 nicht zur Generalversammlung kommen kann.

Ich erteile die Vollmacht, bei einer eventuell stattfindenden Abstimmung meine Stimme abzugeben.

Unterschrift

Un mot du président.

English version hereafter

L'Américain Thomas Schelling, 84 ans, et l'Israélo-américain Robert Aumann, 75 ans, viennent de recevoir conjointement le prix Nobel d'économie pour leurs travaux réalisés dans les années soixante et soixante-dix sur la théorie des jeux. Ils ont en particulier permis une meilleure compréhension des conflits et de la coopération entre les individus, les États et les organisations.

En lisant cette information il m'est venu à la tête que les écoles européennes et en particulier celle de Luxembourg, auraient pu constituer un terrain d'étude intéressant pour les deux nobelistes.

Car prétendre que cette année d'activité de l'APEEE était des plus heureuses serait malhonnête vis-à-vis des parents membres de l'association. Aux problèmes persistants du refus de la séparation horizontale soutenue par l'APEEE, se sont ajoutés les carences du village pédagogique, les questions sur le futur du système des écoles européennes provoquées par la Communication de la Commission au Parlement, les tentatives de création des écoles quasi-européennes, la crise de la cantine suite à la suppression des crédits par le Conseil Supérieur, voire même le déni de justice pour une série de recours en application du droit d'accès en justice établi par la nouvelle convention mais refusé par la Chambre de recours.

Mais malgré ce climat morose l'APEEE se devait de continuer son activité, voire s'ingénier davantage pour faire face aux nouveaux défis. Elle a dû s'investir dans des négociations sur plusieurs fronts, organiser des mobilisations, faire des représentations aux partis politiques et des instances de l'administration luxembourgeoise.

Je dois donc en premier lieu remercier les collègues membres du Comité de gestion pour cet investissement, pour leur patience pendant les interminables réunions - qui se terminaient normalement à une heure telle que nous risquions de voir nos voitures se convertir en citrouilles - mais surtout de leur engagement à défendre certes leur point de vue personnel, sans pour autant mettre en péril la cohésion du Comité et la crédibilité de l'APEEE.

Nous aurons donc de quoi discuter lors de l'Assemblée générale du 29 novembre à laquelle nous vous attendons nombreux. Vous trouverez ci-dessous les rapports des différents groupes qui déploient nos activités. Mais rien ne remplace votre présence physique durant l'assemblée générale pour débattre des problèmes et pour doter le Comité de gestion des mandats nécessaires pour la nouvelle période. Car l'APEEE est loin de se trouver au bout de ses peines

Costas POPOTAS

A word from the President

Version française ci-avant

The American Thomas Schelling, 84 years, and the Israelo-American Robert Aumann, 75 years, have jointly received the Nobel Prize in economics for the study they completed in the 1960s and 1970s on "game theory". Their ideas allowed for a better understanding of conflicts and cooperation between individuals, States and organisations.

All the sudden, reading this information I realized that European schools and in particular the one of Luxembourg, would have been an ideal test bed for the two nobelists.

Because last year has not been the happiest for the APEEE. And it would have been dishonest to hide from parents the fact that we did practically nothing more than participate in conflicts and hold negotiations. Alongside the problems of horizontal split - a permanent claim by the APEEE, which did not find any more sympathies despite our efforts - the technical deficiencies of the pedagogical village and the effort to have them tackled and repaired, perplexities about the prospects of the European schools system and their governance stirred by last summer's Communication of the Commission to the Parliament, the creation of a number of (fake?) European schools, the crisis of the canteen as a consequence to the suppression of budgetary allowances by the Board of Governor, even the "denial of justice" that was opposed to parents following litigation in areas perfectly provided for in the new Convention, but obviously unwanted by the Complaints board, this is briefly our summary of our last year's endeavours.

Nevertheless, despite this morose and gloomy atmosphere, APEEE maintained its activity at full; it even intensified it in order to cope with new challenges. It invested heavily in negotiations on several aspects, organized demonstrations to let press and public know about our claims, made our voice heard through representations to political parties and to the Luxembourg's authorities.

Many thanks therefore first and above all to all the members of the Management Committee for their investment, for their patience during the interminable meetings - ending at such an hour that we were likely to see our cars converted into pumpkins - but especially of their commitment to defend their point of view without jeopardizing the cohesion of the Committee or the credibility of the APEEE.

We will take the time to discuss all our business during the General meeting on 29 November. We expect you to be there in masses and it will certainly be worth it. In this issue of Ad Parentes we have included all the summary information and reports of the different groups that compose the overall activity of the APEEE. But your support could not replace your physical presence to the General Meeting, necessary in order to hold an in depth debate around the problems and to endow the Management Committee with the mandates necessary for our action during the new period. Make sure you are there because we are still far from definitely solving the school problems.

Costas POPOTAS

Financial report 2005 - 2006

Version française ci-après

PRINCIPAL ISSUES DURING THE YEAR

Compared with the previous year there have not been any material changes, either in the financial situation or in the accounting of the APEEE. It should however be noted that the accounting surplus is high due to unforeseen reimbursements from Interparents, and donations still to be made from the School Fête income.

PROFIT AND LOSS ACCOUNT

Operating Income

- The membership fee of 24 euro has been paid by 1081 members, which means a slight increase from the 1148 members last year.
- The grant from the Social Action Committee (CASS) is intended to cover the personnel expenditure of the full-time secretary. This practice has now been in force for two years. Due to the unclear situation in regard with the length of the long term absence of the permanent secretary of the association, the subsidy for the last two months of the financial year are still pending.
- Due to the financial situation of Interparents, a total of 4 448 euro was reimbursed to the APEEE. For 2006/2007, Interparents will charge only a nominal fee of 50 euro.

School Fête Income and Expenditure

The school Fête took place on 17 June 2006. The net result of this year was 6 412 euro, compared with 6 128 euro in 2004/2005.

Operating Expenditure

- Personnel costs. The APEEE employs one full time secretary and two persons on a part-time hourly basis for specific needs. As the long term absence of the permanent secretary of APEEE started only at the end of the financial year, it has not had a material impact on the costs of 2005/2006.
- Website. The cost of the setting up of the renewed PA website has been 3 747 euro.

Donations made during the accounting year

This year, the total amount of donations paid was only 652 euro compared to 5 490 euro last year. It should however be noted that the donations from the School Fête revenues have not yet been made.

Expenditure for social purposes

The APEEE has been granting assistance to members experiencing difficulties with the payment of Category III school fees ("Minerval"), or with the cost of School trips. For both types of assistance, the applications are checked against income criteria, and they represent 10 % or 20% of the cost of the school fee or trip. A total of 14 families have been helped, 11 for the fees and 3 for the trips. The total expenditure has been 9 660 euro, compared with 10 311 euro of last year.

BALANCE SHEET

Due to the positive surplus of the year, the reserve of the APEEE has increased by 58%, from 19 836 euro on 31/08/2005 to 31 349 euro on 31/08/2006. As the donations are still to be made as explained above, no positive surplus is foreseen for 2006/2007.

We always endeavour to manage the budget of the Parents' Association in the best interests of the pupils and their families.

Markku POTTONEN

PARENTS' ASSOCIATION OF THE EUROPEAN SCHOOLS IN LUXEMBOURG
INCOME & EXPENDITURE STATEMENT FOR YEAR ENDED 31/08/2006 (in euros)

| | 31/08/2006 | 31/08/2005 |
|---|------------------|------------------|
| <u>INCOME</u> | | |
| <u>Operating receipts</u> | | |
| Grant from Social Affairs Committee (CASS) | 38 652,33 | 37 894,00 |
| Membership fees | 25 920,00 | 27 552,00 |
| Donations | 1 190,49 | 1 479,74 |
| Interparents | 4 447,80 | 172,93 |
| Receipts from meetings and other sources | 1 414,35 | 415,42 |
| Bank interest | 376,55 | 236,56 |
| Sales of Vademecums | 0,00 | 210,00 |
| | 72 001,52 | 67 960,65 |
| <u>Receipts from fêtes and events^(*)</u> | 10 175,16 | 11 143,97 |
| Total receipts | 82 176,68 | 79 104,62 |
| <u>EXPENDITURE</u> | | |
| <u>Operating expenses</u> | | |
| Staff costs | 42 944,72 | 44 637,28 |
| Hire of photocopier | 4 030,28 | 3 827,36 |
| Interparents membership fee | 1 140,00 | 3 383,36 |
| Postage costs | 2 683,38 | 3 663,64 |
| Office costs | 1 071,23 | 218,30 |
| Mission travel costs | 521,05 | 661,45 |
| Gifts | 30,00 | 86,70 |
| Web site | 3 746,70 | 0,00 |
| Drinks | 237,98 | 454,94 |
| Bank charges | 129,30 | 120,60 |
| Insurance | 38,57 | 37,76 |
| Sundry | 237,00 | 73,74 |
| | 56 810,21 | 57 165,13 |
| <u>Expenditure for fêtes and events</u> | 3 503,54 | 4 035,02 |
| <u>Donations made during the accounting year</u> | 625,00 | 5 490,00 |
| <u>Expenditure for social purposes</u> | | |
| Assistance with school fees (Minerval) | 9 311,00 | 9 902,00 |
| Assistance with school trips | 349,00 | 409,00 |
| | 9 660,00 | 10 311,00 |
| Total expenditure | 70 598,75 | 77 001,15 |
| Net receipts | 11 577,93 | 2 103,47 |

* Including sale of second-hand books

Luxembourg, 2006

Markku POTTONEN, Treasurer

REPORT OF EXTERNAL AUDITOR

I certify that the financial report as at 31st August 2006 of the Parents' Association of the European Schools in Luxembourg is an accurate statement of the financial situation and activities during the year 2005/2006.

Benoît MORISSET

PARENTS' ASSOCIATION OF THE EUROPEAN SCHOOLS IN LUXEMBOURG
BALANCE SHEET AS AT 31/08/2006 (in euros)

| | 31/08/2006 | 31/08/2005 |
|--|------------------|------------------|
| <u>ASSETS</u> | | |
| <u>Treasury</u> | | |
| Société Générale bank account | 19 022,33 | 31 109,62 |
| Post Office bank account | 11 348,53 | 1 861,70 |
| Petty cash | 303,07 | 57,43 |
| | 30 673,93 | 33 028,75 |
| <u>Amounts receivable (1)</u> | 6 556,33 | 1 140,00 |
| TOTAL ASSETS | 37 230,26 | 34 168,75 |
| <u>LIABILITIES</u> | | |
| <u>Reserves</u> | | |
| Reserves at the start of the accounting year | 19 835,75 | 17 732,28 |
| Net receipts for the accounting year | 11 577,93 | 2 103,47 |
| | 31 413,68 | 19 835,75 |
| <u>Amounts payable (2)</u> | 5 816,58 | 14 333,00 |
| TOTAL LIABILITIES | 37 230,26 | 34 168,75 |

Details

| | | |
|--|-------------------|-------------------|
| <u>(1) Amounts receivable</u> | <u>31/08/2006</u> | <u>31/08/2005</u> |
| Interparents membership fee paid in advance | 0,00 | 1 140,00 |
| Reimbursement of Interparents mission costs | 0,00 | 0,00 |
| Grant from CAS not yet received | 6 556,33 | 0,00 |
| | 6 556,33 | 1 140,00 |
| <u>(2) Amounts payable</u> | <u>31/08/2006</u> | <u>31/08/2005</u> |
| Grant from CAS received in advance | 0,00 | 12 427,00 |
| Taxes and social contributions payable | 3 441,70 | 1 526,00 |
| Membership fees received in advance | 120,00 | 120,00 |
| Invoices payable from school fête | 1 122,18 | 260,00 |
| Provision for work done on Web site not yet invoiced | 1 132,70 | 0,00 |
| | 5 816,58 | 14 333,00 |

Rapport financier 2005 - 2006

English version above

FAITS MAJEURS DE L'ANNEE

Par rapport à l'année précédente, il n'y a pas eu de changements matériels de la situation financière ni dans la comptabilité de l'APEEE.

COMPTE DE RÉSULTAT

Recettes de gestion courante

- Le cotisation de 24 euro est payé par 1 081 membres, ce qui représente une petite hausse par rapport à l'année précédente.
- La subvention du Comité d'Action Sociale est destinée à couvrir les dépenses de personnel de la secrétaire employée à plein temps. Cette pratique s'applique depuis deux ans. En raison de l'incertitude concernant la durée d'absence à long terme de la secrétaire permanente de l'APEEE, la subside portant sur les deux derniers mois de l'année financière est mise en suspens.
- En raison de la situation financière d'Interparents, un total de 4 448 euro est remboursé à l'APEEE. Pour l'année 2006/2007, Interparents demandera seulement une contribution nominale d'environ 50 euro.

Recettes et dépenses « Fête de l'école » :

La fête de l'école a eu lieu le 17 juin 2006. Le résultat net de cette année a été de 6 412 euros comparé à 6 128 euros en 2004/2005.

Dépenses de gestion courante :

- Dépenses de personnel: l'APEEE emploie une secrétaire à plein temps et deux personnes à temps partiel par heures de prestation pour des besoins spécifiques. Comme l'absence à longue durée de la secrétaire permanente de l'APEEE n'a commencé que vers la fin de l'année, il n'y a pas d'impact sur les frais de 2005/2006.
- Site web: les frais de lancement du site renouvelé de l'APEEE sont 3 747 euro.

Dons octroyés durant l'exercice :

Cette année, le montant total des dons s'élève à 652 euro, contre 5 490 pour l'année précédente. Toutefois il faut noter que les dons sur base des recettes de la fête n'ont pas encore été octroyés.

Dépenses à caractère social :

L'APEEE a accordé une aide aux membres confrontées à des difficultés financières pour le paiement du Minerval de catégorie III et pour le paiement des voyages scolaires. Pour les deux types d'aide, les dossiers de demande sont examinés d'après les grilles de revenus, et peuvent représenter 10% ou 20% du montant du Minerval et/ou du voyage scolaire. En total 14 familles ont reçu une aide, 11 au titre du minerval et 3 au titre des voyages. La dépense totale a été de 9 660 euro, en comparaison avec 10 311 euros l'année précédente.

BILAN

En raison du résultat positif de l'année, la réserve de l'APEEE a augmenté de 58%, passant de 19 836 euros au 31/08/2005 à 31 349 euros au 31/08/2006. Comme certains dons restent à être octroyés, on ne prévoit pas d'excédent pour 2006/2007.

Nous nous efforçons toujours de gérer au mieux les finances de l'APEEE dans l'intérêt des élèves de l'École et de leurs familles.

Markku POTTONEN

ASSOCIATION DES PARENTS D'ELEVES DES ECOLES EUROPEENNES DE LUXEMBOURG
COMPTE DE RESULTAT AU 31/08/2006 (en euros)

| | 31/08/2006 | 31/08/2005 |
|--|------------------|------------------|
| <u>RECETTES</u> | | |
| <u>Recettes de gestion courante</u> | | |
| Subvention du Comité des affaires sociales | 38 652,33 | 37 894,00 |
| Cotisations des membres | 25 920,00 | 27 552,00 |
| Dons | 1 190,49 | 1 479,74 |
| Interparents | 4 447,80 | 172,93 |
| Recettes réunions et autres | 1 414,35 | 415,42 |
| Intérêts bancaires | 376,55 | 236,56 |
| Ventes de Vademecums | 0,00 | 210,00 |
| | 72 001,52 | 67 960,65 |
| <u>Recettes fêtes et manifestations(*)</u> | 10 175,16 | 11 143,97 |
| Total recettes | 82 176,68 | 79 104,62 |
| <u>DEPENSES</u> | | |
| <u>Dépenses de gestion courante</u> | | |
| Dépenses de personnel | 42 944,72 | 44 637,28 |
| Location de la photocopieuse | 4 030,28 | 3 827,36 |
| Frais d'adhésion à Inter-parents | 1 140,00 | 3 383,36 |
| Frais postaux | 2 683,38 | 3 663,64 |
| Frais de secrétariat | 1 071,23 | 218,30 |
| Frais de déplacement | 521,05 | 661,45 |
| Achat de cadeaux | 30,00 | 86,70 |
| Site Web | 3 746,70 | 0,00 |
| Achat de boissons | 237,98 | 454,94 |
| Frais bancaires | 129,30 | 120,60 |
| Frais d'assurance | 38,57 | 37,76 |
| Divers | 237,00 | 73,74 |
| | 56 810,21 | 57 165,13 |
| <u>Dépenses "Fêtes et manifestations"</u> | 3 503,54 | 4 035,02 |
| <u>Dons octroyés durant l'exercice</u> | 625,00 | 5 490,00 |
| <u>Dépenses à caractère sociales</u> | | |
| Aide pour le Minerval | 9 311,00 | 9 902,00 |
| Aide pour les voyages scolaires | 349,00 | 409,00 |
| | 9 660,00 | 10 311,00 |
| Total dépenses | 70 598,75 | 77 001,15 |
| Recettes nettes | 11 577,93 | 2 103,47 |

* Y compris ventes de livres

Luxembourg, le 2006

Markku POTTONEN, Trésorier

CERTIFICAT DE L'AUDITEUR EXTERNE

Je certifie que les états financiers au 31 août 2006 de l'Association des Parents d'Elèves de l'Ecole Européenne de Luxembourg présentent sincèrement la situation financière et les résultats des opérations de l'Association au cours de l'année 2005/2006.

Benoît MORISSET

ASSOCIATION DES PARENTS D'ELEVES DES ECOLES EUROPEENNES DE LUXEMBOURG
BILAN AU 31/08/2006 (en euros)

| | 31/08/2006 | 31/08/2005 |
|---|-------------------|-------------------|
| <u>ACTIF</u> | | |
| <u>Trésorerie</u> | | |
| Société Générale | 19 022,33 | 31 109,62 |
| Compte Chèque Postal | 11 348,53 | 1 861,70 |
| Caisse | 303,07 | 57,43 |
| | 30 673,93 | 33 028,75 |
| <u>Comptes de régularisation actif (1)</u> | 6 556,33 | 1 140,00 |
| TOTAL ACTIF | 37 230,26 | 34 168,75 |
| <u>PASSIF</u> | | |
| <u>Réserves</u> | | |
| Réserves au début de l'exercice | 19 835,75 | 17 732,28 |
| Recettes nettes de l'exercice | 11 577,93 | 2 103,47 |
| | 31 413,68 | 19 835,75 |
| <u>Comptes de régularisation passif (2)</u> | 5 816,58 | 14 333,00 |
| TOTAL PASSIF | 37 230,26 | 34 168,75 |

Détails

| | <u>31/08/2006</u> | <u>31/08/2005</u> |
|---|-------------------|-------------------|
| <u>(1) Comptes de régularisation actif</u> | | |
| Cotisation Inter-parents payée d'avance | 0,00 | 1 140,00 |
| Remboursement frais de missions Inter-parents | 0,00 | 0,00 |
| Subvention CAS pas encore reçu | 6 556,33 | 0,00 |
| | 6 556,33 | 1 140,00 |

| | <u>31/08/2006</u> | <u>31/08/2005</u> |
|---|-------------------|-------------------|
| <u>(2) Comptes de régularisation passif</u> | | |
| Subvention CAS perçue d'avance | 0,00 | 12 427,00 |
| Charges fiscales et sociales à payer | 3 441,70 | 1 526,00 |
| Cotisations de membres perçues d'avance | 120,00 | 120,00 |
| Factures fêtes de l'école à payer | 1 122,18 | 260,00 |
| Travaux web faits, non facturés | 1 132,70 | 0,00 |
| | 5 816,58 | 14 333,00 |

RAPPORTS D'ACTIVITE 2005-2006 ACTIVITY REPORTS

Comité de gestion 2005-2006 Management committee (version 31.08.06)

Membres du Bureau / Executive committee members :

Président:

Costas POPOTAS costas.popotas@curia.eu.int 4303-4432, Fax 4303-2424

Vice-Présidents:

VP. Administratif et Financier / Administration and Finance:

Daniela AMODEO-PERILLO daniela.amodeo_perillo@curia.eu.int 4303-3323, Fax 4303-3697

VP. Luxembourg 2:

Ian DENNIS ian.dennis@cec.eu.int 4301-35129, Fax 4301-35979

VP. Pédagogie Primaire / Primary Pedagogy:

Monique LOOS monique.loos@curia.eu.int 4303-2316

VP. Pédagogie Secondaire / Secondary Pedagogy:

Pasquale CRISTALLO pasquale.cristallo@curia.eu.int 4303-3640, Fax 4303-2577

Secrétaire / Secretary:

Gabor SOMOGYI gabor.somogyi@curia.eu.int 4303-4100, 26432995

Trésorier / Treasurer:

Markku POTTONEN markku.pottonen@eca.eu.int 4398-45969, Fax 4398-48809

Autres Membres / Other members :

| | | |
|--------------------|--|------------------------|
| Stanislava BOUDOVA | stanislava.boudova@cec.eu.int | 091-815014, 292944919 |
| Pascal CHENAL | pascal.chenal@europarl.eu.int | 021-245243, 4300-22046 |
| Reza FARDOOM | reza.fardoom@cec.eu.int | 4301-33907 |
| Alexander GEURTZ | alexander.geurtz@ses-global.com | 426694 |
| Gerard HANNEY | gerard.hanney@cec.eu.int | 4301-34929 |
| Birgitte HOLST | bholst@europarl.eu.int | 4300-23177, 357834 |
| Isabel LEITE | ileite@europarl.eu.int | 317868, 4300-23250 |
| Luca MARTINELLI | luca.martinelli@ec.europa.eu | 4301-38101 |
| Rodolfo MASLIAS | rmaslias@europarl.eu.int | 4300-23872 |
| Raoul PRECHT | rprecht@europarl.eu.int | 4300-23351 |
| Sandrine SCHROEDER | schroelu@pt.lu | 021-366209 |
| Oliver STEINMETZ | O.Steinmetz@eib.org | 4379-3057, 26094080 |
| Rhonda WILKINSON | rhondamatt@altnet.lu | 458152 |

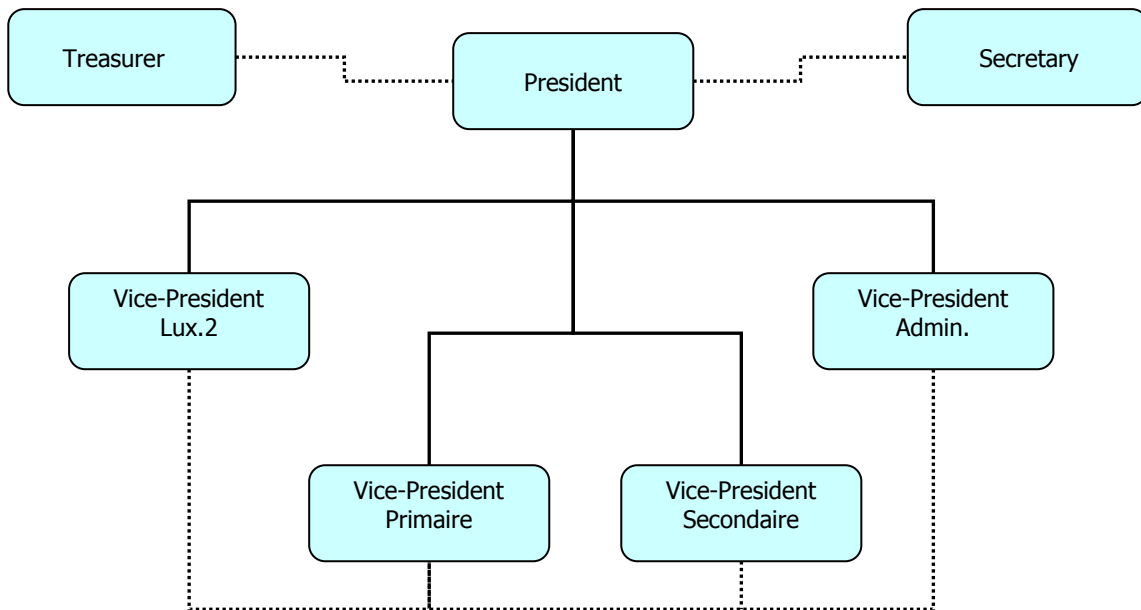
Total : 20. Il n'y a pas de membres co-optés / There are no co-opted members.

Malheureusement, Georges EHSES est mort vers la fin de l'année. Il n'est pas remplacé avant les élections / Sadly, Georges EHSES died towards the end of the year. He was not replaced before the elections.

Organigramme de l'APEEE 2005-2006 APEEE organisation chart (version 31.08.06)

Il n'y a pas d'organigramme officielle pour l'APEEE – et dans la pratique le bureau travaille en équipe – mais s'il y en avait, un extrait ressemblerait la suivante :

There is no official organigramme for the APEEE – and in practice the bureau works as a team – but if there were one, an extract might look something like the following:



Groupes de travail 2005-2006 Working groups (version 31.08.06)

1. Pédagogie maternelle et primaire – Nursery and primary education

Chef de groupe : Monique Loos.

Conseil d'Éducation Maternelle et Primaire

- Nursery and Primary Education Council :

Voyages scolaires (organisation et suivi)

- Residential school trips (organisation and monitoring) :

Santé et sports

- Health and sports :

Enfants à besoins spéciaux

- Children with special needs :

Monique Loos

Ian Dennis

Luca Martinelli

Birgitte Holst

Autres membres : Alexander Geurtz, Isabel Leite, Rodolfo Maslias, Markku Pottonen, Raoul Precht, Sandrine Schroeder, Gabor Somogyi, Oliver Steinmetz, Rhonda Wilkinson.

2. Pédagogie secondaire – Secondary education

Chef de groupe : Pasquale Cristallo.

Conseil d'Éducation Secondaire

- Secondary Education Council :

Comité Bibliothèque

- Library Committee :

Santé et sports

- Health and sports :

Enfants à besoins spéciaux

- Children with special needs :

Pasquale Cristallo

Gerard Hanney

Birgitte Holst

Birgitte Holst

Autres membres : Daniela Amodeo-Perillo, Stanislava Boudova, Pascal Chenal, Georges Ehse, Reza Fardoom, Monique Loos, Rodolfo Maslias, Costas Popotas, Markku Pottonen, Gabor Somogyi, Oliver Steinmetz, Rhonda Wilkinson.

3. Questions administratives Luxembourg II – Administrative issues (Luxembourg II)

Chef de groupe : Ian Dennis.

Conseil d'Administration Lux.2

- Administrative Board Lux.2 :

Bâtiments / Sécurité Lux.2

- Buildings and Security Lux.2 :

Coordonnation avec groupes d'action (GUDEE, CLP, ESPAC)

- Coordination with action groups (eg. GUDEE, CLP, ESPAC) :

Ian Dennis

Luca Martinelli

Oliver Steinmetz

Autres membres : Stanislava Boudova, Raoul Precht, Sandrine Schroeder, Gabor Somogyi, Rhonda Wilkinson.

4. Questions administratives Luxembourg I – Administrative issues (Luxembourg I)

Chef de groupe : Daniela Amodeo-Perillo.

Conseil d'Administration Lux.1

- Administrative Board Lux.1 :

Daniela Amodeo-Perillo

Bâtiments / Sécurité Lux.1

- Buildings and Security Lux.1 :

=

Autres membres : Georges Ehses, Reza Fardoom, Alexander Geurtz, Gerard Hanney, Monique Loos, Costas Popotas, Markku Pottonen, Sandrine Schroeder, Oliver Steinmetz, Rhonda Wilkinson.

5. Questions administratives communs – Administrative issues (common)

Chef de groupe : Costas Popotas.

Enfants Catégorie III

- Category III children :

Rhonda Wilkinson

Activités Périscolaires

- Extracurricular activities :

Daniela Amodeo-Perillo

Cantine

- Canteen :

Rodolfo Maslias

Statuts

- Statutes :

=

Fêtes et manifestations

- Fêtes and events :

Costas Popotas

Echanges Linguistiques

- Language exchanges :

Ian Dennis

Enfants SWALS / Accueil nouveaux pays membres

- SWALS children / Welcome new countries :

=

Autres membres : .

6. Information et communication – Information and communication

Chef de groupe : Costas Popotas.

Ad Parentes

- Ad Parentes :

Ian Dennis

Site web

- Web site :

Gerard Hanney

Fiche d'infos

- Newsletter :

Gerard Hanney

Délégués de classes maternelle/primaire

- Class delegates (Nursery/Primary) :

Ian Dennis

Délégués de classes secondaire

- Class delegates (Secondary) :

Daniela Amodeo-Perillo

Contacts avec d'autres associations (MdZ, ATPEE, CPE)

- Contact with other associations (MdZ, ATPEE, CPE) :

Ian Dennis

Autres membres : .

7. Interparents

Chefs de groupe : Costas Popotas, Daniela Amodeo-Perillo.

Working group on primary pedagogy :

=

Autres membres : Stanislava Boudova, Ian Dennis, Georges Ehses, Reza Fardoom, Alexander Geurtz, Gerard Hanney, Birgitte Holst, Luca Martinelli, Markku Pottonen, Raoul Precht, Sandrine Schroeder, Gabor Somogyi, Rhonda Wilkinson.

Conseil d'Education maternelle et primaire 2005 - 2006

English version hereafter

Pour cause de maladie, je n'ai malheureusement pas pu suivre une grande partie des réunions de ce conseil dont vous trouverez un compte-rendu plus détaillé sous la plume de Ian Dennis. Toutefois, j'aimerais souligner une initiative très constructive mise en place, au cours de l'année scolaire 2005/2006, pour les 5èmes années primaires: le conseil d'école Luxembourg 1 & 2. Le conseil d'école est un lieu où les représentants de classe peuvent travailler ensemble pour résoudre les problèmes rencontrés à l'école. Son but est de renforcer la communauté scolaire et d'améliorer la vie à l'école pour tout un chacun. Il donne la parole aux élèves, validant leur "droit d'être écoutés" et, par a contrario, le devoir d'écouter le point de vue des autres. Le conseil d'école est constitué par les représentants des élèves de chaque classe, des enseignants et la direction de l'école. Pour autant que je sache ce conseil s'est réuni trois fois au cours de l'année 2005/2006. Cette expérience qui s'est révélée être très enrichissante pour tout le monde devrait, au fur et à mesure, être étendue aux classes de 4ème et 3ème primaire. Vous trouverez, ci-contre, les lignes directrices de ce programme.

Monique LOOS

DROITS ET RESPONSABILITES POUR MIEUX VIVRE ENSEMBLE

A L'ECOLE ... J'ai le droit d'être écouté

Alors, je respecte les autres

DANS LA COUR... J'ai le droit de jouer en sécurité

*Alors, j'évite les jeux dangereux
je joue avec des balles en mousse
je respecte les plantations
j'utilise les poubelles*

DANS LES BÂTIMENTS... J'ai droit à une école calme et propre

*Alors, je prends mon goûter en classe
je marche calmement dans les couloirs
je laisse les toilettes propres*

A LA CANTINE... J'ai le droit de manger tranquillement

*Alors j'arrive à l'heure
je prends le temps de manger calmement
je respecte la nourriture
je laisse la table propre*

RIGHTS AND OBLIGATIONS FOR LIVING TOGETHER BETTER

AT SCHOOL ... I have the right to be heard

Alors, je respecte les autres

DANS LA COUR... J'ai le droit de jouer en sécurité

*Alors, j'évite les jeux dangereux
je joue avec des balles en mousse
je respecte les plantations
j'utilise les poubelles*

DANS LES BÂTIMENTS... J'ai droit à une école calme et propre

*Alors, je prends mon goûter en classe
je marche calmement dans les couloirs
je laisse les toilettes propres*

A LA CANTINE... J'ai le droit de manger tranquillement

*Alors j'arrive à l'heure
je prends le temps de manger calmement
je respecte la nourriture
je laisse la table propre*

Nursery and primary Education Committee 2005 - 2006

Version française ci-avant

TRANSLATE ML TEXT.

+ ID to add text

Voyages scolaires 2005 - 2006

English version hereafter

Residential school trips 2005 - 2006

Version française ci-avant

Children attending the European Schools in Luxembourg are fortunate to benefit from a series of residential school trips during the primary cycle, and further organised visits in the secondary cycle. The pedagogic advantages of these trips are well recognised. The visits are fully integrated into the school curriculum. They provide an excellent opportunity to develop and mature in a controlled environment. They provide some of the lasting memories of childrens' school career. The APEEE welcomes the commitment of the teachers responsible for coordinating the trips in 2005/2006 :

| Date | Year | Type | Location | Distance | Duration | Cost (euro) | Coordinator |
|--------------|------|----------------------|---|-------------------|-----------|-------------|-------------|
| April 2006 | 2 | Countryside (Spring) | 'Les Genevriers', Plaine, France (Vosges) | 3½ hours (coach) | 2 nights | 200 | Mme.Prévot |
| October 2005 | 3 | Countryside (Autumn) | | | 4 nights | 200 | Mme.Prévot |
| May 2006 | 4 | Seaside (Summer) | 'Duinse Polders', Blankenberghe, Belgium | 4½ hours (coach) | 4 nights | 260 | M.Apers |
| January 2006 | 5 | Mountains (Winter) | 'Intersoc', Valmeinier, France (Savoie) | 10½ hours (train) | 10 nights | 670 | M.Molineris |

The Plaine trips have been operating for some 10 years. The centre can accommodate around 140 children at a time and is very well managed. The Blankenberghe trip has also been operating for many years. All the children travel together.

The major change this year was for the snow discovery classes. The 'traditional' visit to Bardonecchia in Italy (organised for 30 years) was not possible due to the Turin Winter Olympics, and the way the visit was organised had generated costs which were increasingly difficult for many families to support, especially following the Commission decision to cease reimbursement of such costs to its staff (the financial contribution requested from parents for the 2004/2005 visit was 930 euros !). After some research, an alternative site was found just a short distance away in Haute-Savoie, France, and an external organisation was contracted to organise the trip. A well-received information evening was organised in November, and negotiations continued to fix the price at as low a level as possible for the given educational content. Initially, 700 euros were requested from parents, however the school was subsequently able to reimburse 30 euros to each family.

After the trip, a detailed review was undertaken by the school and the APEEE to identify strengths and weaknesses of the visit in order to plan the January 2007 visit (possible competition between Valmeinier and Bardonecchia).

The school trips are jointly managed by the school and the APEEE. Summary financial accounts are presented below for Blankenberghe and Bardonecchia. No information is available for the Plaine visit. At the 27.09.05 meeting of the Primary Education Council it was agreed that a new mandate should be drawn up to formalise the respective roles of stakeholders. This has not yet been done.

Other school trips

The role of the APEEE management committee in the organisation of single class outings is limited, although class representatives may be involved. The BoG recommends that not more than 10 days of visits take place each year during the nursery cycle and years 1-2 of the primary cycle, and not more than 20 days per year during years 3-5 of the primary cycle. This includes the organised residential visits. Single class outings are supposed to be approved in advance by the school administration and recorded in a central register. This has not been examined to identify the degree, if any, to which language sections vary in terms of frequency of visits, site selection, content, timing, etc. For such outings, the pupil : teacher ratio should not exceed 15 : 1, which is typically achieved with the help of volunteer parents. The APEEE would like to thank all such volunteers for their commitment.

<<insert Blankenberghe accounts here>>

<<insert Bardonecchia accounts here>>

Conseil d'Education secondaire 2005 - 2006

English version hereafter

-Prévention drogue, Paradroque

Plusieurs réunions se sont déroulées à ce propos, ainsi qu'une conférence destinée aux parents et aux professeurs. D'autres projets sont en cours.

-Accès à Internet à la bibliothèque et autorisation d'apporter son PC pour le connecter à l'école, la direction étudie encore les probabilités sachant qu'un contrôle est indispensable.

L'APEEE a défendu le fait que les élèves des 2 dernières années (6e et 7e) et parfois 5e, sont aujourd'hui confrontés à un planning horaire de classe pas du tout pratique, avec des trous très importants qui leur impose de s'organiser avec les devoirs à faire en dehors de la maison, de plus les professeurs demandent souvent de travailler à partir de documents à rechercher sur le site...!

-Quelques modifications dans le règlement de l'école et suggestions concernant les sanctions disciplinaires (voir Retenues)

-Fête du Bac, cette année la fête s'est très bien passée, très bonne gestion de la part des élèves et profs.

-Soutien en langues, il va de soit que les élèves des nouveaux pays qui découvrent en secondaire de nouvelles langues ont besoins de soutien, l'école reconnaît les besoins et agira ponctuellement.

-Vandalisme à l'école: Pas assez de professeurs pour une surveillance efficace, les conseillers pédagogiques se retrouvent à avoir des tâches qui pour moi ne leur incombent pas comme par exemple surveillance de la cour, la cantine, vérifier et donner des justificatifs pour les retards, de ce fait ils n'ont pas l'opportunité de faire leur travail de pédagogue. L'APEEE a à plusieurs reprises insisté pour que l'école engage, ce qu'on appelle en France des "pions" qui sont en fait de jeunes universitaires qui recherchent un emploi et ce sans résultats!

En attendant les problèmes de vandalisme continuent et l'école est sous tension et de ce fait utilise les voies de sanctions disciplinaires afin d'y remédier.

-Sorties autorisées!

L'APEEE a constaté que l'école est dans l'impossibilité de contrôler visuellement les élèves qui quittent l'école et que de ce fait ceux-ci ont été confrontés à des sanctions disciplinaires qui peuvent parfois aller jusqu'au renvoi. Afin d'éviter des accidents de toutes sortes, nous avons suggéré que la carte de l'élève possède et qui actuellement se trouve dans sa poche soit mise en évidence afin de distinguer les 6e et 7e des autres.

-Une nouveauté lorsqu'un élève passe en conseil de discipline:

Lors de la réunion du conseil secondaire du 7 juin 2006, le Directeur a fait valoir que l'élève pouvait de son propre gré et suivant la sanction, suggérer lui-même une sanction éducative ou d'intérêt général....!

-Transition du primaire au secondaire:

En avril 2006, la visite de 3 inspecteurs a permis de constater que le passage du primaire au secondaire semblait être parfait (oralement). Les conclusions définitives ne sont pas encore arrivées.

-Bilan du voyage de 2e année et 6e

Très satisfaisant, 3 jours dans un rayon de 150 à 200 km, 1 prof pour 15 élèves, 2 à 3 classes au même endroit. 6e, nouveauté, fiche d'évaluation faite par le professeur et information aux parents.

-Campagne de prévention SIDA avec l'aide du Ministère Luxembourgeois,

Il est décidé d'installer à 4 lieux des appareils pour se munir de préservatifs, mais avant cela une petite formation sera donnée par des professeurs de chimie et bio.

Pasquale CRISTALLO

Secondary Education Committee 2005 - 2006

Version française ci-avant

TRANSLATE PC TEXT.

Comité Bibliothèque 2005 - 2006

English version hereafter

TRANSLATE GH TEXT.

Library Committee 2005 - 2006

Version française ci-avant

During 2005-2006 the secondary library committee met once, on XXXXXX. The following issues were discussed :

GERARD HANNEY

+Mention MotsdeZaza for Primary + FriendsOfSecondarySchoolLibrary ?

Santé et Sports 2005 - 2006

English version hereafter

TRANSLATE BH TEXT.

Health and Sports 2005 - 2006

Version française ci-avant

In the primary school we welcome that the school offers swimming lessons to pupils in 3rd, 4th and 5th year. These take place in *d'Coque* (the new Kirchberg sports centre) and consist of one weekly swimming session for a number of consecutive weeks, for example 6 weeks. They are conducted by a qualified swimming teacher with the assistance of the class teacher and one other adult.

- For the nursery classes and 1st and 2nd primary, swimming lessons take place in the school's own swimming pool, but it is too small to satisfy the demand.
- We are pleased to see that during European Hours, classes sometimes go to *d'Coque* to do various physical activities, for example ball games and table tennis.
- However **as far as sports premises are concerned, the primary school has now reached its limits** and more facilities are needed.

In the secondary school Physical Education (PE) is mainly seen as an indoor activity. Only very rarely do the PE teachers take the pupils out for a jog to improve their worryingly poor fitness. There is a marked difference between the interpretation of the PE curriculum of the teachers in charge of the boys and those in charge of girls.

- The girls learn basic artistic gymnastics such as the handstand, cartwheels, exercises on the bar, the plinth and other apparatus work, various ball games, even a bit of indoor athletics like the high jump, in short a versatile programme.
- The boys, however, are offered a much more restricted programme. There is no apparatus work during PE, no artistic gymnastics. It is football, football and football, with a bit of other ball games and some badminton and table tennis.

For your information here are extracts of the Physical Education Syllabus, Secondary Cycle, ref. 1999-D-152 (for full text see www.apee.lu / <Topical> / Sport)

For example: year 1-2-3 (extracts):

2.1 To ensure a balanced syllabus the following ratios are recommended:

Team Sports 40%, Individual Sports 40%, Complementary Activities 20%.

2.1.1. Team Sports: ...Basketball (2.1.4.1), Volleyball (2.1.4.2) Handball (2.1.4.3) Football (2.1.4.4) Hockey (2.1.4.5)

2.1.2 ...Individual Sports: In this cycle gymnastics and athletics are compulsory elements. ...

2.1.3 Complementary Activities: Complementary Activities may be introduced depending on the School's facilities, the teachers' and the pupils' interests (Ultimate Frisbee, Softball, Dance, Aerobics, Judo, climbing etc.).

2.1.4.6. Gymnastics:

Floor work: Forward/Backward roll, cartwheel, headstand, handstand, sequences, balances.

Jumps: Over the long and short box, basic mini-tramp.

Bars (asymmetric-horizontal/parallel), rings/ropes: Mount, dismount and aided exercises in balance and movement, sequences, etc.

2.1.4.7. Athletics: Running: Technique, endurance, sprints, starts, relays and basic hurdling techniques.

Jumps: High jump - Fosbury flop, long jump, take-off zone/board.

Throws: Different techniques using various equipment

Swimming: 2 recognised strokes (1 on front, 1 on back), participation in various water-based activities.

Birgitte HOLST

Enfants à besoins spéciaux 2005 - 2006

English version hereafter

Children with special needs 2005 - 2006

Version française ci-avant

Integration of children who are experiencing temporary or long-term learning difficulties into the European School system is not easy : the task of the working group is to help and advise parents of such children. During the 2005-2006 school year, assistance was provided to several families. This ranged from simple conversations over a cup of coffee, through explanations of rights and referrals to relevant documentation, to meetings with and on behalf of parents.

With regard to learning support, it should be noted that the APEEE secretariat maintains a list of private tutors, which is periodically published in AdParentes magazine.

Ian DENNIS

- BH to check + say something about new 2006 rules.

Conseil d'Administration Lux.II 2005 - 2006

English version hereafter

TRANSLATE.

Lux.II Administrative Board 2005 - 2006

Version française ci-avant

The Administrative Board is the senior decision-making body at local school level. Formal votes are rarely invoked, but voting rights are : XXXX.

Meetings were organised during the 2005-2006 school year on 22.11.2005, 07.02.2006 and 02.06.2006. The following issues were discussed.

- Rentrée September 2005 (pupils, staffing, collaboration with Lux.1, school projects, buildings/parking) ; Budgeting ; holiday proposals for 2006-2007 ; canteen arrangements ; possible transfer of 4th years to VP in September 2006.

- Village Pédagogique site ; Mamer/Bertrange situation ; staffing ; 2007 budget ; Education Council membership ; School fees ; Learning support ; request for a steering committee meeting.

- Accounts for 2005 ; School fees ; Financial situation at 30.04.2006 ; VP site + Bertrange/Mamer ; Budget

APEEE representation at these meetings was assured by Costas Popotas and Ian Dennis, Ian Dennis and Rodolfo Maslias, and Luca Martinelli and Rodolfo Maslias.

Ian DENNIS.

Bâtiments et sécurité Lux.II 2005 - 2006

English version hereafter

Lux.II buildings and security 2005 - 2006

Version française ci-avant

Provisional site (prefabricated buildings at Village Pédagogique (VP):

APEEE recognises that following pressure of parents (various demonstrations and formal requests by APEEE) an effort has been done by the school and Luxembourg authorities to ensure compliance of the prefabricated buildings to norms, and to provide a better school environment. The VP has improved as compared with the previous school year. Further commitments were obtained during the course of the year (for example to add soundproofing in the canteen).

Nevertheless, APEEE has not received sufficient evidence to consider the buildings as satisfying the legal requirements in terms of health and safety (incompleteness of conformity certificates). For this reason and to avoid further overcrowding, APEEE opposed the transfer of the 4th classes to the Village Pédagogique. The school nevertheless decided to proceed with this transfer in September 2006. For the same reasons, APEEE will oppose the transfer of 5th classes to the VP announced as possible for the next school year.

The situation of the provisional site is particularly worrying given that competent authorities recently announced that the opening of the new school will not take place before school year 2011-2012 at the earliest. This means that thousands of children will have to spend their 4-5 school years of the primary cycle in obsolete and overcrowded prefabricated buildings. This is particularly shameful as it is happening in the richest country of Europe.

New premises for Luxembourg II (Mamer-Bertrange or alternative site)

APEEE continued its policy trying to reverse the decisions concerning the vertical split and the localisation of the school in Mamer. APEEE believes that the new school structure and site should be compatible with the localisation of European Institutions and with the urban and mobility planning of Luxembourg town.

Given the difficulties to acquire the necessary land and the presence of a small stream which periodically floods, the school site has been moved by a few hundred meters in direction of Bertrange, with reduction in space availability. APEEE had the possibility to view preliminary plans and to provide various remarks, among which:

- weaknesses on accessibility and transport plan, in particular concerning nursery and primary pupils;
- insufficient educational quality of classes, lack of open spaces, inadequate sport facilities;
- too high density, gigantic size and difficult internal movements, in particular for small children.
- presence of a high voltage power line at 185 meters from the school buildings (increased health risks);
- presence of a international railway at 65 meters from the classes (security and noise).

It should be remarked that building a smaller secondary school on the proposed site, which could be supported by APEEE, would allow most of these problems to be resolved.

The process of decision and of planning of the new school can so far be indicated as a case of maladministration. The opening of the new school had been announced for 2007 not more than a few years ago. This is currently announced for 2011-2012, but given the state of advancement of preparatory works also this date can be considered as optimistic.

Luca MARTINELLI

Coordonnation avec groupes d'action 2005 - 2006

English version hereafter

Coordination with action groups 2005 - 2006

Version française ci-avant

GUDEE, CLP, ESPAC.

Oliver

Conseil d'Administration Lux.1 2005 - 2006

English version hereafter

Lux.1 Administrative Board 2005 - 2006

Version française ci-avant

Five meetings were organised during the 2005-2006 school year on 09.09.2005, 20.10.2005, 21.11.2005, 06.02.2006 and 01.06.2006. The following issues were discussed.

- Canteen

- Canteen

- Part A (with pupil representatives) : Special needs children ; Financial situation at 30.09.05 ; Teaching posts for 2006-2007 ; Tax treatment of teaching staff ; Canteen.

Part B : Rapport de rentrée September 2005 ; school holidays 2006-2007 ; Canteen ; Quality Assurance proposal ; Lux.1 comments on Commission communication on future of European Schools ; Lux.1 comments on vertical splitting of school ; APEEE questions on application of general rules, language qualifications of teachers, absences of teachers, test durations.

- ?

- ?

APEEE representation at these meetings was assured respectively by Monique Loos and Ian Dennis ; Georges Eheses ; Monique Loos ; Monique Loos ; Monique Loos.

Daniela.

Enfants Catégorie III 2005 - 2006

English version hereafter

Category III children 2005 - 2006

Version française ci-avant

In April of 2005 the Board of Governors decided to increase the school fees payable for the 2006-07 school year by 2%, corresponding to inflation, voting down a proposal to increase fees by 8%. At the same meeting, they decided to commission an independent economist to estimate, by Sept. 2005, the highest optimal level of fees for each of the ES. This was to determine a level of fees to be charged over a period of a number of years. Any increase in fees at a rate above the inflation rate was to be justified. Other changes were implemented, including the possibility of payment in installments, and the obligation to pay 25% of tuition by June 30th for the upcoming school year.

Lobbying:

Although a step in the right direction, as opposed to the unforeseen and dramatic increases effected since 2002, this was still not a guarantee of long-term fair pricing for school fees. With this in mind, the APEEE Cat. III Working Group, composed of Rhonda Wilkinson, Alexander Geurtz and Sandrine Schroeder, set it as our task to lobby for both fair pricing and admissions for Cat. III families, and to coordinate the legal action lead by the Cat. III lawyer Marleen Watté. Our lobbying efforts were greatly enhanced by the collaboration of 3 involved Cat. III parents; Jean-Claude Ruppert, Michel Dimmock, and Patrik Osterblad, who acted with us as a Steering Committee for the so-called Action Group for Fair School Fees. It is difficult for us to defend all Cat. III parents in an organized way, as the school's privacy policy prohibits them from providing us with any list of Cat. III parents. Therefore we must depend on those parents to let us know who they are.

As in the previous school year, Marleen Watté sent out advice to the parents involved in the legal action as to what amount of the fees we agree to pay and what amount we are paying "without prejudice to all our rights, means and actions" Although it is clear that Cat. III parents must pay the amount invoiced in order to retain their children in the ES, it is important to make clear to the school the amount we continue to contest, in the event of future court action.

Several letters were composed and sent. First, an overall reaction letter to the BoG about their April 2005 Cat III decisions was sent in the name of the Lux APEEE before their Oct. 2005 meeting. Concurrently, several individual letters were sent to some of the Member States' Delegates in their national language. Later, letters were sent to the CLP Monitoring Group, the Court of Justice, the EIB and the Court of Auditors. A letter in the form of a petition was filed with the European Parliament and their Petitions Committee has accepted it and forwarded to the Budgets Committee. An "ABC model" was composed by JC Ruppert, illustrating the problems with charging Cat. III "real cost" verses "marginal cost" (see APEEE web-site), and sent to the BoG. Letters were sent to 76 MEPs. In all of these letters the recurring important points were incorporated:

- The importance to the school of Cat. III students, both for financial reasons and for reasons of diversity in the student body.
- The importance pedagogically of Cat. III students, maintaining some language sections which could not and would not be able to exist otherwise
- The negative effects of the unprecedented increases since 2002, which caused an exodus from the school of some Cat. III families and therefore a drop in revenue to the schools
- The importance of maintaining the "family component" which guaranteed reductions of 50% for the first siblings and 75% for the 3rd sibling
- The need for the commitment on a price policy, so that parents could plan for the future, as the commitment for education of each child is 14-15 years
- The request for continuance of "marginal cost" as opposed to "real cost" for Cat. III students, as the infrastructure is in place and they do not add cost to the system
- The argument that charging "real cost" leads to Cat. III families subsidizing Cat. I families.

A meeting summarizing our activities and explaining the new payment and admissions concerns was held on March 20th of 2006. Marleen Watté was also present and explained the legal activities up to that point. The complete minutes of this meeting is available on the APEEE web-site.

Costos Popotas and Rhonda Wilkinson were interviewed by Le Quotidien and an article, devoted entirely to Cat. III issues, was printed in the spring of 2006,

The economist's report did not arrive in Sept. 2005 but in March of 2006. It was a 140-paged document prepared by the Francophone Free University of Brussels, and included 5 scenarios with up to 7 sub-scenarios in each. The report was

problematic for many reasons, and the Working Group reacted with a letter to Interparents delineating our criticisms and concerns. For example, the report concentrated only on the school year of 2007-08, therefore departing from its mandate to arrive at an optimal overall fee pricing. It also ignored marginal cost and sibling reduction. Our letter was then incorporated in an overall Interparents reaction to the report. So far no decision has been made based on the economist's report.

Legal aspects:

The school year 2005-06 has been a frustrating one of inaction on the part of the European Ombudsman. Although Marleen Watté wrote a comprehensive 22-page letter to the European Ombudsman in May of 2005, the European Ombudsman did not react in a timely way. Ms. Watté asked several times for the EO to make their final recommendation. They promised to reply on or before the 31st of July. They then asked for a further delay of Oct. 2006. There are 2 complaints lodged with the EO, one contesting the unfair fee increases from 2002, and the second protesting the lack of conditions or modality for recourse/appeal by the parents against such decisions. The first complaint dates from Aug. 5, 2004. At an open informational meeting of the EO in March 2006, Mr. Diamandouros explained that a delay of 18 months could be expected for a decision if a case is very complex, rarely would a case go unanswered for 2 years.

Our case has now gone past the 2-year mark. In the meantime, the Brussels ES have actually gone to court and had a "favourable" intermediary decision as of June 2006. We await the progression of their results, and the possible repercussions on our own case.

In good faith, Ms Watté presented a breakdown and overview of her costs for the 2 school years 2004-05 and 2005-06 at the March 20 meeting. Although under normal circumstances her law firm would have charged 35,400.00 euros for those 2 years work, she was still only billing us the pre-agreed upon sum of 6500 euros per school year. To date, she is still owed approximately 2500 euros from Cat. III parents involved in the legal action.

Rhonda WILKINSON

Activités périscolaires 2005 - 2006

English version hereafter

Extracurricular activities 2005 - 2006

Version française ci-avant

An extensive programme of more than 70 extracurricular activities is organised for children, covering sports (eg. aikido, hockey, athletics, basketball, football, cricket) and cultural activities (drama DE/EN/ES/FR/IT, guitar, art, dancing EL/Jazz/Ballet). As always, competition for places is fierce !

The Management Committee would like to thank all those involved in making various courses possible.

Administration is jointly coordinated by the APEEE and Mme.Felt on behalf of the schools. Getting the new list ready before the Summer holidays, and processing all the inscriptions in September in time for the mid-October launch, can be a challenge...

<<insert draft accounts>>

Comité Cantine 2005 - 2006

English version hereafter

Le nouveau régime de la cantine après la privatisation et la signature du contrat d'exploitation entre la direction de l'école et la société Luxrest, choisie par un comité d'experts avec la participation active des parents, entraîne un changement du rôle des parents dans ce dossier.

Alors que le groupe de travail « cantine » assumait sous l'ancien régime un rôle de co-gestionnaire avec l'école, le nouveau groupe de travail et ses trois représentants auprès du nouveau « comité cantine » a un rôle consultatif consistant à contrôler la qualité et l'organisation et à veiller à la prestation des services selon le cahier des charges. Ce nouveau rôle sera accompli de la meilleure façon sur base de la consultation constante des parents.

Le groupe est constitué pour le moment par les membres suivants du CdG : Rodolfo Maslias (responsable), Isabelle Leite , Raoul Precht, Ian Dennis, ainsi que les deux membres de l'ancien groupe, Monique Loos et Daniela Amodeo-Perillo qui seront remplacés dès que la transition de l'ancien au nouveau régime sera achevée.

Pendant le premier mois de fonctionnement de la nouvelle cantine, le groupe de travail de l'APEEE a effectué plusieurs contrôles et a formulé des remarques et des suggestions qui ont été publiées dans ad parentes et portées à l'attention de la direction de l'école et du prestataire.

Le 16 octobre, le groupe de travail s'est réuni et a étudié le projet de règlement interne du comité cantine qui sera arrêté au Conseil d'Administration de novembre. Les modifications proposées par le groupe qui concernaient la meilleure représentation des parents au sein de ce comité (p.ex. qu'aucune décision ne puisse être prise si au moins un représentant de l'APEEE n'est pas présent) ont été acceptées par les représentants de l'école.

Il a été décidé de maintenir des contrôles réguliers ainsi qu'un contact permanent avec la direction de l'école et le prestataire afin de transmettre les souhaits des parents et de contribuer de manière constructive au meilleur fonctionnement de la cantine. De même, une page spéciale « cantine » sera prévue dans le site internet de l'Association pour regrouper les commentaires de parents et les menus seront communiqués aux parents intéressés via le service newsletter de notre site.

La première de ces rencontres a eu lieu le 27 octobre et les résultats seront présentés à l'Assemblée générale.

Rodolfo MASLIAS

Canteen Committee 2005 - 2006

Version française ci-avant

The new regime of the canteen after the privatization and the conclusion of the contract between the School and the company Luxrest, which has been chosen by a committee of experts with the active participation of the parents, supposes a change of the parents' role in this field of the APEEE action.

While the old working group « canteen » had in past a co-managing role together with the School, the new group and its three representatives at the "canteen committee" assume a consultative role consisting in the control of the quality and organization and in the verification that the services are provided according to the contract with the provider. This role will be assumed in the best way with a constant communication with all parents.

The group is made by the following members of the APEEE's Managing Committee: Rodolfo Maslias (responsible), Isabelle Leite, Raoul Precht, Ian Dennis, as well as the two members of the old group, Monique Loos and Daniela Amodeo-Perillo who will be replaced as soon as the transition from the old regime will be completed.

During the first month of the functioning of the new canteen, the wg has made several controls and its comments and suggestions have been published in Ad Parentes and brought to the attention of the School's Administration and of the provider.

On October 16thm the wg met to study the draft internal rules of the canteen committee that will be adopted by the next Council of Administration of the School in November. All modifications proposed by the group aiming a better representation of the parents in this committee (e.g. that no decision can be taken without the presence of at least one parents' representative) have been accepted by the School's representatives.

It has been decided to proceed to regular controls and to establish a permanent contact to the School's Directorate and to the provider in order to transmit the wishes of the parents and to contribute in a constructive manner to the best functioning of the canteen. Also, a special section "canteen" is included into the web-site of the Parents' Association and a newsletter service for subscribers to collect the comments of the parents and to publish the menus and other respective information.

A meeting of the wg with the provider and the representatives of the School has been organized in the canteen on October 27th, which results will be announced to the parents at the next General Assembly.

Rodolfo MASLIAS

Statuts 2005 - 2006

English version hereafter

Suite à l'adoption du nouveau statut lors de l'AG du 31 janvier 2005, ce groupe de travail n'avait plus besoin de travailler. Ceci dit, une réflexion interne est lancée pendant l'année 2005-2006 sur les procédures opérationnelles du Comité de Gestion.

Ian DENNIS

Statutes 2005 - 2006

Version française ci-avant

Following the adoption of the new APEEE statutes at the AGM of 31st January 2005, no work was subsequently required by this working group. However, internal rules of procedure of the management committee were the subject of discussion during the 2005-2006 year.

Ian DENNIS

Fêtes et Manifestations 2005 - 2006

English version hereafter

School Fête and Events 2005 - 2006

Version française ci-avant

On 17th June 2006 another successful School Summer Fête was organised by the APEEE management committee, with the help of the Mots-de-Zaza primary school library association, and the Third World Committee. In recent years, the programme has become increasingly varied, with events held in the school courtyard, the salle de fêtes, the nursery building, the primary school buildings, the secondary school buildings, the swimming pool, the canteen and – new this year – a cycling proficiency practical road test around Kirchberg. As always, the event would not have been so successful without the effort of national stand coordinators, demonstrations by participants in extracurricular activities, and all the various contributors. THANK YOU ! A big thank you is also due to the central coordination team of Costas Popotas, Sylviane LeRoy and Yvette Demangel.

Ian DENNIS

<<insert programme here>>

<<insert photographs – or link to Reza>>

Echanges linguistiques 2005 - 2006

English version hereafter

TRANSLATE

Language exchanges 2005 - 2006

Version française ci-avant

Recognising the extraordinary potential arising out of the cosmopolitan backgrounds of children attending the European School(s) in Luxembourg, each year the APEEE organises a system to permit families to get in touch with each other if they are interested in language exchanges to practice and improve their skills outside official school hours, within a family context. Through the warm hospitality of the hosting family, children have an opportunity to make new friends and to learn in an alternative environment, developing their self-confidence. The action is focused on children in upper primary/lower secondary cycles. New volunteers are always welcome : a list is maintained by the APEEE secretariat (the 2006-2007 list is currently being prepared).

Ian DENNIS

Enfants SWALS et accueil nouveaux pays membres 2005 - 2006

English version hereafter

SWALS children and welcome to new countries 2005 - 2006

Version française ci-avant

The schools have currently created language sections in the nursery and primary cycles for Czech, Hungarian and Polish children, although it remains to be seen whether pupil numbers will evolve sufficiently to allow these to remain open (the BoG has adopted tight rules in this regard, known as the 'Gaignage' criteria). Estonian, Cypriot, Latvian, Lithuanian, Maltese, Slovenian and Slovak children are taught as SWALS children, mainly accommodated in the English section. The CZ, Hungarian and Polish children who do not have a class in their own language (e.g. for HU children there is only nursery and primary 1 to 3 in one class).

Given that class sizes in the English section are some of the largest in the school, and are already the primary destination for children from other nationalities (eg. Iceland, Korea, Norway, Turkey...) the large scale integration of SWALS children raises important questions of quality of education delivery for both the SWALS children themselves and for the mother tongue Anglophone children. No adequate solution has yet been found. One suggestion that has been made is to create separate English and English-as-a-foreign-language classes, (quite a few SWALS parents oppose this "separate, but equal" solution as I could witness at the Swals meeting in September this year) so that each group receives the appropriate attention. The APEEE continues to seek commitments at local level and at international level for maximum teacher : pupil ratios of 25 : 1, with a maximum of 25% non mother tongue children.

SWALS children in the primary cycle typically stay in their classes when the rest of the class go to Second Language classes, in order to consolidate their command of the language of their section. This is an undesirable sign of separation from their peers, and it also means that when they eventually transfer to secondary cycle they will not be able to study humanities (Geography, History, Economics) in the same way as their peers, except for those who are able to catch up with the first (in fact for them second) foreign language as well. Primary children from some countries can receive extra classes in their mother tongue. Maltese children have the right to be treated in the same way as Irish children, and a Maltese teacher was appointed for September 2006.

In the secondary cycle, no sections have yet been created for the new countries. However, when children go to second language classes, SWALS children can study their mother tongue...and it is envisaged that they will eventually sit BAC examinations in their mother tongue (with the other BAC subjects, eg. Maths, being examined in the language of the section). A special meeting for SWALS children was organised by the school during September.

The draft start-of-term report (rapport de rentrée) for 2006-2007 identifies XXXX children distributed as follows XXXX.

Ian DENNIS

+ to be checked by Stanislava Boudova/ Gabor Somogyi

Magazine de l'école « Ad Parentes » 2005 - 2006

English version hereafter

The school magazine "Ad Parentes" 2005 - 2006

Version française ci-avant

The AdParentes magazine is the traditional instrument for a transparent flow of information to members, alongside other means such as meetings and the web site. Efforts continue to improve the work done. Four issues were produced during 2005-2006, as follows :

| Issue | Editor | Length (pages) | Disseminated | Circulation (copies) | Audience | Typical content |
|-------------|--------|----------------|--------------|----------------------|-----------------------|---|
| 1 | ID | 58 | October | 3500 | All families | Membership; Back-to-school details; Extracurricular activities; Lux.II update; School canteen; BAC 2005 graduates; APEEE contact information |
| 2 - special | YD | 42 | November | 2000 | Paid-up APEEE members | APEEE management committee reports and accounts |
| 3 | ID | 49 | January | 2000 | | Splitting the school; AGM summary; Canteen news; Future of the European Schools; Homework; Bullying; Redoublement; Where do graduates go?; School trips survey; Private tutors; Class delegates |
| 4 | ID | 55 | May | 2000 | | Future of European Schools; Language; Recognition of BAC; SEN; Events; APEEE elections |

AdParentes is the magazine of the school community : even if they cannot always be included for one reason or another, all contributions are gratefully received (please send them to editor@apeee.lu). If there are areas on which you would appreciate more information, drop the editor a line.

The magazine is produced on a shoestring budget and there are no specific funds to finance its production. Placing paper copies into envelopes is a time-consuming exercise and postage is a major expense. Members who are happy with electronic copies are invited to note that these are now placed on the APEEE web site.

Ian DENNIS

The APEEE web site 2005 - 2006

Deutsche fassung hierunter

The date of 06-02-06 was a historic one for the APEEE, as phase I of it's new website went 'live'. This first phase, was comprised mainly of the registering of the domain www.apeee.lu, the creation of a Content Management System (CMS) based website which is easy for a non-IT specialist to update, and also the provision of several E-mail addresses (@apeee.lu). The content of the old 'Static' website was transferred into this CMS.

Around mid-September, phase II of the website also went 'live'. The main features of this phase were:

- The possibility for members to subscribe to an Electronic Newsletter (E-newsletter) and indicate which topics are of interest to them. Then the APEEE can selectively send out information to parents via E-mail, at a moments notice, for example about the Canteen, Lux II, category III, What's new on the Website etc.

To subscribe: please go to www.apeee.lu, click on <newsletter>, click on the boxes corresponding to the topics you are interested in, enter your E-mail address etc. You will receive a confirmation via E-mail. Once you have confirmed, the details are stored in our database. By 12/10/2006, without much publicity, 311 people had subscribed!

- The creation of a Class Representative Database to which we can add E-mail addresses of Class Reps, so that the Association can send out information to selected groups of Class Reps. e.g. all Class Reps in the French section, primary school, Luxembourg II.

- Some features for internal use by the members of the APEEE Management Committee.

These new features and also the dynamic site we have now, which enables any member of the APEEE management committee to easily create a new sub-section on the website and upload documents, will greatly improve the quality of the website for parents and make it a rich store of information for parents.

Gerard HANNEY

The APEEE web site 2005 - 2006

Version française ci-avant

Der 6. Februar 2006 war für die APEEE ein historisches Datum, da an diesem Tag die Phase I der neuen Webseite veröffentlicht wurde. Diese erste Phase bestand hauptsächlich darin, die Domain www.apeee.lu zu registrieren, ein Inhaltsverwaltungssystem (CMS auf Englisch) einzurichten, das auch von Nicht-Informatikern genutzt werden kann, und schließlich, mehrere praktische E-Mail Adressen einzurichten (@apeee.lu). Der Inhalt der alten Webseite wurde in das neue CMS übertragen.

Die zweite Phase des neuen Web-Angebots wurde Mitte September abgeschlossen. Die Hauptbestandteile dieser Phase sind:

- Die Möglichkeit, sich für themenspezifische Rundschreiben anzumelden. Die APEEE kann somit Eltern Informationen per E-Mail über gewählte Themengebiete zeitnah zuschicken, z. B. über die Kantine, Lux II, Kategorie III, Neues von der Webseite usw.

Um sich anzumelden: besuchen Sie bitte www.apeee.lu, wählen Sie <newsletter>, wählen Sie die gewünschten Themenbereiche und geben Sie Ihre E-Mail Adresse etc ein. Zur Bestätigung erhalten Sie von der APEEE eine E-Mail. Sobald Sie Ihre Anmeldung bestätigt haben, werden Ihre Daten registriert. Bis zum 12. Oktober 2006 hatten sich schon – ohne große Ankündigung – 311 Personen angemeldet!

- Die Erstellung einer Datenbank aller Elternsprecher, in der die Kontaktdaten aller Elternvertreter zentral gespeichert sind und jederzeit erneuert werden können. Somit können Informationen gezielt und effizient an bestimmte Zielgruppen der Elternvertreter geschickt werden, z. B. Elternvertreter der französischen Sprachsektion, Grundschule, Luxemburg II.

- Einige interne Funktionen für die Verwaltungsmitglieder der APEEE.

Diese Funktionen unserer neuen Webseite erlauben es nun allen Verwaltungsmitgliedern der APEEE selbst neue Kategorien zu schaffen und Informationen auf unsere Webseite zu laden. Somit wird die Qualität unserer APEEE-Webseite wesentlich verbessert und zu einer wichtigen Informationsquelle für Eltern.

Gerard HANNEY

Fiches d'infos 2005 - 2006

English version hereafter

Newsletter 2005 - 2006

Version française ci-avant

The need for such a system has long been recognised by the APEEE, and was flagged for inclusion in 'phase 2' of the web site development plan.

Gerad HANNEY

Délégués de classe maternelle et primaire 2005 - 2006

English version hereafter

Nursery and primary class delegates 2005 - 2006

Version française ci-avant

Each year the APEEE coordinates a network of class delegates with the aim of promoting the flow of information to and from parents and within the School community at large. APEEE representatives visit every class during the start-of-term meetings, and as part of their visit they explain the role of the class delegate and distribute registration forms to class teachers.

Further information is provide in the first edition of AdParentes magazine and on the APEEE website. Despite this effort, not all classes have an official representative and there is a risk that the flow of information is impeded . Nursery and Primary class teachers/delegates who have not yet submitted contact details to the APEEE secretariat for 2006-2007 are invited to do so as soon as possible. An uptodate list of contacts will then be published in a subsequent edition of Ad Parentes.

Meetings + newsletter

Délégués de classe secondaire 2005 - 2006

English version hereafter

Secondary class delegates 2005 - 2006

Version française ci-avant

Secondary delegates will be confirmed during the November parent-teacher meetings. In the meantime, contact details for 2005-2006 apply.

COSUP

Contacts avec d'autres associations 2005 - 2006

English version hereafter

TRANSLATE

Contacts with other associations 2005 - 2006

Version française ci-avant

Good collaboration was achieved with the "Mots-de-Zaza" primary school library association, notably with regard to gaining improvements in library facilities for the pedagogical village (VP) site; the organisation of a very successful book fair in December 2005; and the annual school fête. However, following the increase in numbers of pupils on the VP site the school administration has been forced to reduce the duration of each library session, to a level where the effectiveness of these – especially for younger children – is beginning to be questioned.

The Transport Association was created as a separate association deliberately to relieve the workload of the APEEE, but close links continue to be maintained. Some members of the management committee are also members of the ATPEE. The issue of transport arrangements for the eventual new school is a particular concern. Also the re-arrangement of the secondary school timetable means that buses are not always available.

Friendly relations were maintained during the year. At the end of the 2005-2006 school year the CPE moves out of the classrooms currently occupied on the VP site into new prefabricated buildings on an adjacent site. However it will continue to have access to some facilities (notably the canteen). Concerns over the transfer of children from the nursery school to the CPE were raised following an incident at the end of the year, and new procedures were put in place.

Some collaboration was possible with the Third World Committee (TWC), notably regarding organisation of the Christmas Market and the Summer Fête, and by providing publicity for other events. However the TWC was reluctant to explore deeper links. Some parents have raised questions about the desirability of formalised fundraising by the school for specific charitable activities.

Ian DENNIS

Interparents 2005 - 2006

English version hereafter

Interparents, instance qui réunit les Associations des Parents d'élèves de toutes les écoles européennes, a tenu ses trois réunions annuelles en octobre 2005, janvier et avril 2006.

Les discussions ont porté sur le minerval, les enfants SWALS (= élèves sans section linguistique), la notion de 'section linguistique', l'accréditation des écoles ne relevant pas du système européen, le crédit d'heures, les critères pour avoir accès aux programmes SEN (= élèves à besoins spéciaux) et 'Learning Support'. On a parlé aussi de la possibilité de prévoir un BAC alternatif pour les élèves qui ne sont pas en mesure de passer le BAC européen; du changement de l'horaire harmonisé au primaire, du 'quality management' par rapport aux enseignants; de la situation des 'chargés de cours'. Les cantines, le nombre maximum d'élèves par classe, la formation continuée des enseignants, l'évaluation du personnel détaché ont également constitué des thèmes de discussion tout comme le règlement général des écoles européennes et le futur du système scolaire européen.

Les ordres du jour des réunions de Interparents dépendent directement des ordres du jour du Conseil Supérieur (BoG), organe intergouvernemental composé par les représentants des états membres et de la Commission de l'UE. Les parents ont le droit de participer aux réunions élargies dudit Conseil, et disposent d'un droit de vote sur les propositions n'impliquant pas de volet financier. Le Conseil organise plusieurs sous-comités, tels le Comité Administratif et Financier (CAF) et le Comité pédagogique Primaire et Secondaire.

Daniela AMODEO-PERILLO

Interparents 2005 - 2006

Version française ci-avant

Interparents is a non-profit association constituted by the parents' associations all the European schools. Three meetings were convened, in October 2005, January and April 2006.

Several points have been discussed, such as school fees (minerval); SWALS (= Students Without A Language Section); the concept of 'language section'; that of 'associate' schools; **the time credit**; the criteria to be fulfilled to have access to SEN (= Special Educational Needs) and Learning Support programmes. An alternative leaving certificate to replace the European BAC in case of special difficulties; the revision of the primary harmonised timetable; a teachers' quality management and the 'chargés de cours' (non seconded teachers) have also been the object of Interparents meetings. Further discussions also concerned the school canteens; the maximum class size; in-service training for teachers; evaluation of seconded staff; the general rules of the European schools as well as the future of the European school system.

The agendas of Interparents meetings are directly derived from those of the Board of Governors (BoG). The BoG is an intergovernmental body where all member states and the EU Commission are represented. Parents participate in 'enlarged' BoG meetings but may only vote on proposals which have no financial implications. The BoG has a number of sub-committees and working groups, including the Administrative and Financial Committee (CAF) and the Nursery + Primary and Secondary Education Committee.

Daniela AMODEO-PERILLO.

Thème du débat : L'avenir des Ecoles Européennes

English version hereafter

Discussion theme : The Future of the European Schools

Version française ci-avant

NB. This text copied from AdPar no.1 2006-2007

Following the consultation process conducted last year, the Board of Governors Secretariat prepared a multipage "synthesis" of the various national responses to the Commission Communication on the Future of the European Schools. The European Parliament produced a detailed commentary. Parents' Associations gave their perspectives. Subsequently the Commission have been working in a 'high level' group and there is also a BoG working group on the same issue. A final version summarising the Commission recommendations is anticipated for publication before the end of 2006. By way of a reminder to readers of the issues involved, a selection of previously-published summaries are reproduced below.

The Commission has summarised its orientations as follows :

The Communication identified three areas needing evaluation and improvement, and presented short term options which could be implemented within the remit of the 1994 Convention as well as long term options which would require a more in depth reorganisation of the European Schools System (ESS).

Governance

In the short term

- the operational role of the Administrative Boards of each school in the management and governance should be enhanced.
- Schools Directors should be responsible for the recruitment of teaching staff.
- EU institutions should have a greater degree of representation in the BoG.
- the remit of the Complaints Board should be extended.

In the long term

- the financial and administrative functions should be clearly separated from the educational function. The former should be taken over by a Commission or an inter-institutional body, the latter by an Education Council at an intergovernmental level.
- there should be a common statute of EU employee (eg. contract agent) for various positions of school staff.

Finance

In the short term

- the budget preparation and execution should be improved and made more transparent, and multi-annual budget planning should be introduced.
- the criteria of admission for non-EU staff children should be clear and transparent, and the school fees for this category of pupils should come closer to the real costs.
- the BoG should consistently implement its own rules and decisions regarding the opening, maintaining or closing of ES or language sections (Gainage criteria).

In the long term

- the financing arrangement should be reviewed, including the transfer of financial costs of teaching from Member States (MS) to EU budget.

Educational offer

The following proposals do not require a modification of the Convention, and therefore could be implemented in the short term:

- the ESS should undergo an external evaluation
- the evaluations/inspections of the quality of the services offered by the ESS should be improved.
- the provisions for pupils with special educational needs (SEN) and for pupils who do not have access to a language section corresponding to their mother tongue (SWALS) should be evaluated and improved.
- the possibility of an alternative leaving certificate to the European Baccalaureate (EB) should be explored.
- the option of offering the ES programmes outside the ESS in cooperation with other schools should be explored.
- the existing programmes should be better harmonised, and the ESS should expand its educational offer to include a broad modern curriculum.
- the maximum class size should be reduced, and account taken of the presence of SEN or SWALS pupils.

The Commission has also prepared an initial overview of the national contributions as follows :

Governance

In the short term

- There is virtual unanimity on the need to enhance the autonomy of the Administrative Boards of the ES, according to existing provision of the Convention.
- Concerning the recruitment of teaching staff, some contributions are open to a greater involvement of the Directors of the schools, others are opposed to that proposal, but almost all wish to leave the final decision to the MS.
- Most of the contributions reject the proposal to increase the degree of representation of the EU institutions in the BoG.
- A majority of contributions is in favour of the extension of the remit of the Complaints Board.

In the long term

- A large majority of contributions is opposed to the separation of the financial and administrative function from the educational one.
- There is no consensus and few strong opinions on the question of a common statute of EU employee.

Finance

In the short term

- There is a virtual unanimity in favour of modernised and more transparent budget preparation and execution as well as of multi-annual planning.
- Most contributions agree with the need for clear and transparent criteria of admission for non EU staff children, but there is no consensus on the question of school fees for this category of pupils.
- Most contributions agree with the implementation of BoG rules (Gaignage criteria) for the opening or closing of schools or language sections.

In the long term

- There is no consensus on the issue of reviewing the financial arrangement, including the transfer of teaching costs from MS to EU budget.

Educational offer

In the short term

- There is a consensus in favour of an external evaluation of the functioning of the ESS.
- A strong majority is in favour of improved evaluation and inspection of the quality of the services offered by the ESS.
- A strong majority is in favour of the evaluation and improvement of special provisions regarding SEN pupils and SWALS pupils.
- A majority is in favour of exploring the possibility of an alternative certificate.
- A majority supports the proposal to consider offering ES programmes outside the ESS to other schools.
- A strong majority is in favour of harmonising existing programmes and expanding the educational offer to include broad modern curriculum.
- Most contributions are in favour of reducing class size and taking into account the presence of SEN or SWALS pupils.

Additional specific comments

Different staff committees express specific comments arising from their particular situation.

Staff committee of the ES

- considers that the discussion on the future of the ESS should take place in the BoG.
- expresses concerns regarding teachers' working conditions and salaries.

Administrative and ancillary staff of the ES

- regrets not to be mentioned in the Communication.
- calls for a representation of the AAS in the BoG.
- makes suggestions for improvement of working conditions and salaries.

Administrative and ancillary staff of the OSGES

- claims a specific coordinating position.
 - expresses concerns regarding respect for existing permanent contracts and status.
 - proposes their integration as EU officials.
-

APEEE contact information 2006-2007

APEEE – Association des Parents d'Elèves de l'École Européenne

web site: <http://www.apee.lu>

e-mail: office@apeee.lu

Ad Parentes e-mail: editor@apeee.lu

Bulletin d'information / Newsletter: inscription par voie du site web / subscription via web site

COMITE DE GESTION 2006-2007 MANAGEMENT COMMITTEE

(version 01.10.06)

Membres du Bureau / Executive committee members :

Président:

Costas POPOTAS costas.popotas@curia.europa.eu 4303-4432, Fax 4303-2424

Vice-Présidents:

VP. Administratif et Financier / Administration and Finance:

Daniela AMODEO-PERILLO daniela.amodeo_perillo@curia.europa.eu 4303-3323, Fax 4303-3697

VP. Luxembourg 2:

Ian DENNIS ian.dennis@ec.europa.eu 4301-35129, Fax 4301-35979

VP. Pédagogie Primaire / Primary Pedagogy:

Isabel LEITE isabel.leite@europarl.eu 4300-23250, 317868

VP. Pédagogie Secondaire / Secondary Pedagogy:

Pasquale CRISTALLO pasquale.cristallo@curia.europa.eu 4303-3640, Fax 4303-2577

Secrétaire / Secretary:

Monique LOOS monique.loos@curia.europa.eu 4303-2316

Trésorier / Treasurer:

Markku POTTONEN markku.pottonen@eca.eu.int 4398-45969, Fax 4398-48809

Autres Membres / Other members :

| | | |
|-----------------------------|--|---------------------|
| Reza FARDOOM | reza.fardoom@ec.europa.eu | 4301-33907 |
| Alexander GEURTZ | alexander.geurtz@ses-global.com | 426694 |
| Gerard HANNEY | gerard.hanney@ec.europa.eu | 4301-34929 |
| Birgitte HOLST | bholst@europarl.eu.int | 4300-23177, 357834 |
| Forough KARLBERG | karlberg@crosscomm.lu | - |
| Luca MARTINELLI | luca.martinelli@ec.europa.eu | 4301-38101 |
| Rodolfo MASLIAS | rodolfo.maslias@europarl.eu.int | 4300-23872 |
| Marika PAPASIDERI | maria-elza.papasideri@ec.europa.eu | 4301-35817 |
| Raoul PRECHT | raoul.precht@europarl.eu.int | 4300-23351 |
| Antonella SALERNO-ALMENDROS | antonella.salerno@curia.europa.eu | 4300-3280 |
| Sandrine SCHROEDER | schroelu@pt.lu | 021-366209 |
| Gabor SOMOGYI | gabor.somogyi@curia.europa.eu | 4303-4100, 26432995 |
| Oliver STEINMETZ | O.Steinmetz@eib.org | 4379-3057, 26094080 |
| Rhonda WILKINSON | rhondamatt@alternet.lu | 458152 |

Total : 21. Il n'y a pas de membres co-optés / There are no co-opted members

SECRETARIAIRE PERMANENTE 2006-2007 PERMANENT SECRETARIAT

(version 01.10.06)

Bureau / Office address : Bâtiment Jean Monnet, Bureau C1/004, L-2920 LUXEMBOURG

Tel: 4301-33105, Fax: 4301-34869

Ouverture du bureau / Office opening hours :

Lundi / Monday : 8.30 - 16.00

Mardi à Vendredi / Tuesday to Friday : 8.30 - 12.30

Présence à l'école / Presence at school :

Lux.1 – Nouveau Bâtiment Primaire / Lux.1 – New Primary Building : n/a

Lux.2 – Village Pédagogique / Lux.2 – Pedagogical Village : n/a

